

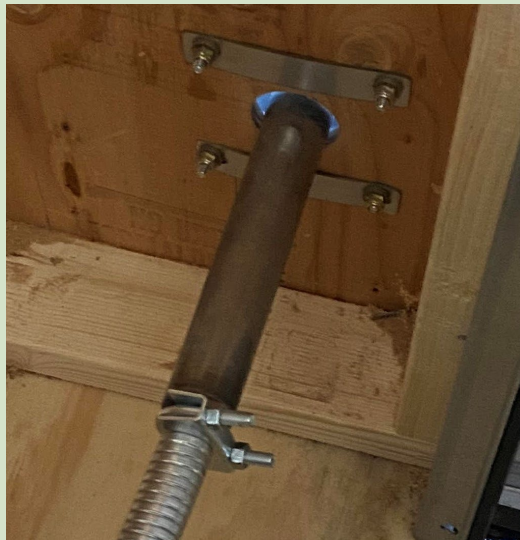
Through Wall kit installation

NOTE: A generator should not be run in or in close proximity to a living area. Allow components to cool after running generator before touching.

IMPORTANT: We highly recommend keeping the first couple feet of a silicone tubing run fairly straight to reduce heat buildup and extend the life of the tubing. A tight bend will cause a kink and premature failure.

1. Create hole for largest pipe diameter (hole can be made ¼” to ½” larger than outside diameter of the pipe then filled with 100% silicone or high temperature caulk to create an insect/varmint seal).
2. Flange side of through wall kit to be inserted through the wall with the two tabs with holes contacting the outside wall.
3. Fasten flange to the wall by using screws into the wall (if possible) or using the flange holes as a template to drill through the wall (supplied flat plates can be used with long bolts or threaded rod on the inside wall for stability).

NOTE: Mounting screws/bolts are not supplied with the kits as one size does not fit all applications.



4. Ensure generator is anchored sufficiently enough to prevent generator from moving away.

Positive feedback is greatly appreciated, but if you are not satisfied, please contact us.

See us at: <https://genexhaust.com/>